

SUPERIOR OUTDOOR AIR DISTRIBUTION

There is simply no duct like it in the world. Thermaduct combines the latest air distribution technology with a choice outdoor weather barrier to create a duct that offers the highest R-value and lowest air leakage rates in the industry. Unsurpassed performance was the goal to create a duct that can not only deliver every cubic foot of air it is fed, but to treat the air with the utmost respect by not exposing it to fibrous or volatile organic chemical latent liners.

Indoor, the air passes a smooth aluminum surface that is clad to Kingspan's Kooltherm closed cell rigid thermoset resin insulated core. The outer layers include factory autohesively bonded FSK aluminum with a UV stable, 1000 micron titanium infused vinyl that is vacuum pressed and laminated permanently to Kingspan KoolDuct. Air distribution segments are connected together with an easy to use 4-bolt flange system. Once installed...all seams are sealed completely for uncompromising integrity and one of the best outdoor duct warranties in the industry.



thermaduct™ FEATURES

- PATENTED SYSTEM
- UL 181 LISTED KOOLDUCT LINER
- PASSES UL 181 MOLD GROWTH TEST
- CLOSED CELL INSULATION
- HIGHEST R-VALUE SELECTIONS
- PROVEN LOW AIR LEAKAGE
- 10 YEAR LIMITED WARRANTY*
- UV STABLE, 1000 MICRON VINYL CLADDING
- INTERIOR DUCT LINING OPTIONS
- BUILT IN THE USA
- UNION MADE



thermaduct™
OUTDOOR DUCT SOLVED

Thermaduct LLC
26610 Eckel Rd.
Perrysburg, Ohio 43551
toll free (855) 809-6903
www.thermaduct.com

Copyright by Thermaduct, LLC

thermaduct™
OUTDOOR DUCT SOLVED



THE DUCTWORK DESIGNED FOR THE ELEMENTS

* See Product warranty for specific warranty details
Thermaduct is pre-engineered and pre-fabricated in certified facilities across the US.



**NOT JUST
ANOTHER
DUCT...
IT'S A
SOLUTION**

Thermaduct is a patented pre-engineered duct system that incorporates the duct, insulation and cladding all in one high performance product. While other manufacturers use tapes, adhesives and screws, which experience degradation over time, Thermaduct uses a seamless heat formed corner or chemical welded seam to ensure impervious water integrity. A water tight duct also provides low air leakage...Thermaduct keeps the conditioned air in and the outdoor elements out!

Thermaduct's patented Airtruss System provides a strong internal framework to handle static and dynamic loads such as wind, snow and rain, ensuring a robust system designed for the elements.

THE UGLY TRUTH ABOUT OUTDOOR DUCT

Air distribution is a part of a construction project that is often ignored, yet accounts for up to 30% of the HVAC energy utilized. Building construction has employed thermal transmission reduction initiatives through the emerging energy codes, but most ducting systems in the US have not even achieved the performance of the average windows being installed today. When you combine the poor thermal performance with the excessive air leakage rates...your existing duct is letting you down.

More imminent in most duct systems is migration of water into the air passage system. The proof is on the roofs of buildings that employ outdoor ductwork. Over time the performance of the moisture barrier degrades to a point where moisture is allowed in. Moisture reduces the performance of the insulation and augments microbial growth either on, or in, the duct.



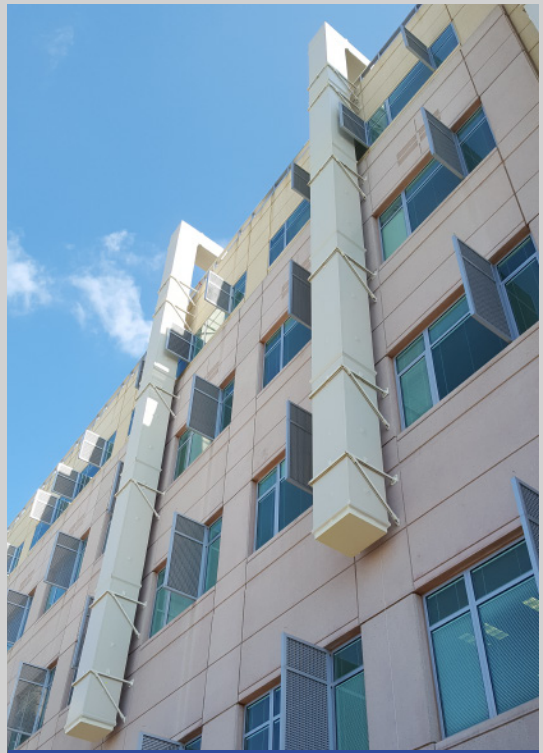
A variety of factors can degrade your duct and insulation's performance. What will your R-Value be next spring, summer, fall and winter?

DELIVERING PERFORMANCE WHILE SAVING ENERGY

A CHOICE OF "R"

Thermaduct offerings of industry solutions like no other that meet or exceed the ASHRAE and ICC Energy Codes not only today...but 10 years from now. Choose one of the following or request custom values built to your order.

- R-8.1
- R-12
- R-16.2
- R-20
- R-24



Additional color options available recommended for vertical sections of ductwork. Ask your Thermaduct Representative for more information

A DUCT WITH A HIGHER IAQ

A perfect duct would not promote or harbor the growth of bacteria and would not allow air to leak in or out of the duct. Thermaduct is Kingspan KoolDuct fortified, offering performance that exceeds the standards of other duct offerings today. Consistent delivery of air over a non-corrosive aluminum surface with no open fibers over closed cell rigid thermoset resin insulation makes Thermaduct a perfect IAQ solution for your high specification outdoor ducting project.



Certain sizes of Thermaduct can be made in 13 foot sections, cutting down on required connections

THE THERMADUCT ADVANTAGE

